

HONEY SHOW RESULTS

EDITH STEVENS TROPHY - Best Honey in Show **JIM McNEIL**

W.G. CHANT MEMORIAL - Best Exhibit in Show **JIM McNEILL**

Med. Honey **PAT ALLEN**

Set Honey **JIM McNEILL**

Clear for sale **PAT ALLEN**

Set for Sale **JIM McNEILL**

Gift Honey **JIM McNEILL**

Novice clear **PATRICK YOUNG**

Clear Honey {Beekeeping less than 5 years}

PATRICK YOUNG

Cut Comb **GARY FURNELL**

Frame for Ext. **JIM McNEILL**

Light Honey **ANGELA MANDER**

Dry Mead **PAUL HEWSON**

Sweet Mead **JIM McNEILL**

Beeswax **GARRY FURNELL**

Pair of Wax Candles **JIM McNEIL**

Fudge **LORNA PATTLE**

Honey Cake **JIM McNEILL**

Carrot Fruit Cake **LORNA PATTLE**

Bakery **TOM KEEPER**

Photograph **GARRY FURNELL**



November 2015

Romford Division

EBKA Charity Number: 1031419

DATES FOR THE DIARY

Committee Meeting: Thursday 19th November, 7.30, Jim's Place, Collier Row

December meeting: Friday 4th, 8pm, Chadwick Hall, Gidea Park

Social Evening! Everyone Welcome

*****Please bring along some goodies to share; what you want to drink and glasses; plus a small wrapped gift for the free raffle.*****

Change of meeting evening:

We must change the evening of our monthly meeting for 2016. St Michael's Church will no longer let us book just one Friday a month. The Committee is looking into various other options, such as, a different evening, or another venue. No decision has yet been made and **the December meeting will be in Chadwick Hall**, St Michael's Church, as usual. If you have any ideas as to a suitable alternative venue, then do let a Committee Member know. We need a hall to accommodate about 70 people and be bookable for one evening a month, with tea/coffee making facilities.

Subscriptions 2016:

Subscriptions are due on 1st January 2016 and you will get your form with the December papers. Please pay promptly to help the Secretary and to avoid a break in papers and insurance. You will be delighted, I'm sure, to know that subscriptions will remain at the same level as 2015, despite the rise in BBKA capitation. This is because the CEC decided, for the second year running, that the shortfall would be paid out of EBKA central funds. Don't forget to indicate how you wish to receive your papers, and that there is a £6 charge if you want them posted to you. Please also ensure your email address is legible.

Romford Division Contacts:

Secretary ~ Pat Allen

01708 220897 ~ pat.allen@btconnect.com

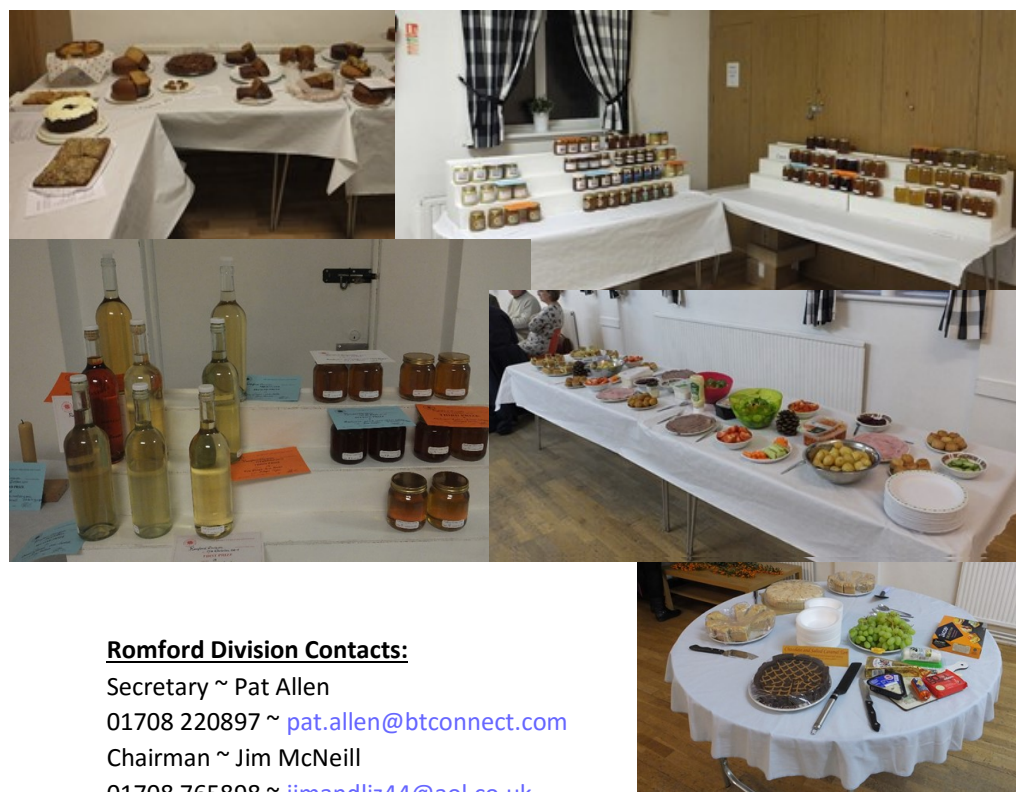
Chairman ~ Jim McNeill

01708 765898 ~ jimandliz44@aol.co.uk

Divisional Voting Member/Trustee ~ Pádraig Floyd

07894 419800 ~ psafloyd@yahoo.com

Website: www.ebka.org



Experiences of a Basic Assessor by Ted Gradosielski – 2nd October

Ted started by explaining to us that the exam is designed to be a pleasure; on arrival he offers the students tea and biscuits to put them at ease.

The location of the exam is important and cannot be carried out on your own hive. Also, you have to be properly dressed in your clean protective clothing. You will be assessed orally and practically and must know about diseases. Make sure your smoker does not run out during the exam.

The assessor has to be qualified as well as have experience in general husbandry exams. The examiner will get the student to tell him all the basic knowledge a beekeeper should know. The basic exam takes about one and a half to two hours and consists of three parts. You will need to pass 50% in each section.

The sections are:

Manipulation – showing that you can handle bees and the beekeeping equipment and explaining to the assessor what you are observing.

Verbal questioning – showing an understanding of the natural history of the honey bee and bee-keeping.

Diseases and pests – proving you have an awareness of diseases and pests.

An assessment of assembling a frame and fitting it with foundation.

Ted explained that there is an e-learning facility on Bee Base.

Ted reminded us all that it is important to remember to enjoy your exam!!!!

JILLY SPEAKMAN-BELL



Beekeeping notes for November ~ written by Pat Allen

There is not much to do this month as the bees should by now be well settled for winter. Make sure you have woodpecker guards on and mice cannot get in.

The bees need ventilation but only at top **or** bottom, not both. So with mesh floors the **insert should be left out** to give ventilation below, and the holes in the crownboard closed off. By all means put some insulation over the crownboard. The hives must be off the ground so air can circulate to keep the hive dry.

Remember to order your oxalic acid for winter varroa treatment!



Report of Romford Honey Show 2015

The judging room was brimming with honey this year. The array of honey colours ranged through light, nearly medium and medium. There was set, and labelled for sale, amidst candles, cakes and beeswax as well as mead, not to mention the photographs.

Our judge this year, Mike Barke, had a huge task on his hands. He tasted from 116 jars of honey, then sipped and sniffed samples from 8 bottles of mead. He tested the candle exhibits by lighting one of each pair to watch how they burnt, then selected a photograph. All of which seemed to become easier when he then had to judge - by prodding, cutting, sniffing and tasting - cakes and fudge from a total of 30 entries. When the exhibits are such a good standard, he must have wondered how on earth to make a choice of 1st, 2nd, or 3rd places. Yet he did. Thank you to Mike for his hard work and dedicated attention to detail in judging our show, and for his helpful comments afterwards.

None of this year's show could have happened without our club members entering. So a great round of applause for all of you who took part. Thank you.

The list of this years winners and photographs can be found on the back page.



The trophies for the winners and certificates for second and third places were handed out after supper. Special thanks went to Arthur Huggins for his calligraphy skills writing the certificates. Also, special thanks to Liz, Pauline and Ruth for a delicious supper.

So now we prepare for the 2016honey show. Get ready, your name could be the next one on the cup!

By Helen Kingsford Show Sec.

Oxalic Acid Treatment ~ Michael Webb

As with last year there will be no charge for those members who request treatment and use the Division's Oxalic Acid bulk order from C Wynne Jones.

A listing will be available at the November monthly meeting for members to provide details. If you cannot attend the meeting, please send me an email with the number of hives you wish to treat and the location(s) of your hives. My email address is gsecebka@virginmedia.com

You will be notified by email of the coordinator who will arrange the timing for the treatment of your hive(s). The cost of treating each hive remains at 50 pence and, at the December 2015 and January 2016 monthly meetings, a box will be available for those who wish to make a voluntary contribution to help defray the cost to the Division.

As a result of other commitments next year I will not be in a position to continue as the Divisional Bulk Buy Co-ordinator. If there is a member interested and would like to take on this role for the benefit of members of the Division, please contact me either by email or calling me on my mobile 0771 249 0511.