



Romford Division



Dates for the Diary

Committee Meeting: Tuesday 22nd November 19:30, Via Zoom

Next Meeting: Thursday 3rd November, 20:00

Topic: Honey Extraction

Venue: Chadwick Hall, Main Road, Gidea Park, RM2 5EL

Speaker: Jim McNeil, Paul Wiltshire

Dead Varroa mites on a correx insert, viewed through a microscope at x100 magnification. The insert had been stored for 3 days away from the hive, note the opaque nymphs that have not fed on blood and were still alive.

Photo, Graeme Ellis



OCTOBER Beekeeping Notes

Have you finished feeding and treating? The weather will be cooling rapidly and the bees should have finished storing the feed by now. If you think they are still short of stores you could give them some fondant to supplement. Let's hope that the ivy will give a final boost to winter stores, and you may even have Himalayan balsam near you.

Don't forget to record your varroa treatment – it's a legal requirement to keep this record for five years! Take out the varroa insert and check the mite drop, record the results. You can leave this insert out now. Colonies in the larger hives (such as National 14x12 or Commercial), and small colonies, will be fine with just a brood box for winter, but larger colonies in National hives will need brood box + super. Configure this with the super **below** the brood box and – most important – **remove the queen excluder!** The queen must be able to move around the hive with the cluster so she can be tended and kept warm. There are various ways to insulate non-poly hives, but it is very important to insulate and to close off ventilation at the top. By the end of October make sure the hives have protection in place against woodpecker attack and incursion by mice.

Pat Allen

Hive Insulation, Derek Mitchell. 1st September 2022

Derek is a mechanical engineer and became interested in beekeeping by helping his wife with her hives. He used his skills to generate computer models of hives, and from this an artificial tree to research the thermal structure inside, then took it apart to understand what the bees are doing.

Bees spend 80% of their time in their hives, they need to keep the hive 18 degrees centigrade even during the winter. Man-made hives lose a lot of heat through conduction, whereas a tree is much more efficient in terms of heat loss.

Honeybees have always been studied from the point of view of man-made hives, rather than a colony in a natural tree setting. Varroa is increased in man-made hives due to a lower humidity, which encourages the varroa mite to reproduce far more easily. Whereas tree hives have higher humidity preventing the varroa from breeding. Therefore, when building new hives trying to replicate the conditions within a tree will increase the bees chances of survival. A colony within a tree will adjust the environment by controlling the flow of water, air, and heat.

The honeybee chooses a tree hollow that has an entrance at the bottom of the hollow, so that hot air has less chance to escape. They will fill holes with propolis to stop warm air leaking out and to help keep the warm air in, while maintaining the correct vapour level.

By having a varroa mesh floor on a man-made hive, it will cause heat to escape during hot days. Honeybees have their own hive air conditioning. When they fan outside the hive, they are evaporating water thereby directing air to keep the hive cool. With a natural colony in a tree they have water cooled walls, this insulates and chills the nest. Derek believes that the best base for a traditional hive is a solid floor to keep it warm in the winter. He also closes off ventilation at the top and insulates the sides, as our man-made wooden hives have thin walls and lose a lot of heat that way.

Jilly Speakman-Bell

ROMFORD HONEY SHOW

Saturday 15th October 2022

Ascension Church Hall, Collier Row Rd, Collier Row, RM5 2BA

Romford division won the Presidents Cup at the Essex Show this year. We obviously have wonderful bees, honey and many talented members.

It's now time to support the annual Romford Honey Show. Enter as many categories as you can from the schedule, we need to impress our judge. There's something for everyone, be it honey, bakery, candles, mead or a photograph. Classes for novices as well as seasoned exhibitors.

I will be taking entries at the next meeting on October 6th, where labels will be given out for your exhibits. Or alternatively you can contact me via email, angelam59@hotmail.co.uk with your entries and labels will be handed out on the day.

Please ensure all exhibits arrive at the venue in good time, from 12 noon. Judging starts at 2.30pm.

RETURN OF TROPHIES. If you have one from last year please return it cleaned at the October meeting. Or when you drop off your exhibits at the hall on show day.

The ANNUAL SUPPER will follow at 6pm at the Ascension Hall.

This is a great opportunity to socialise with fellow beekeepers, or even bring a friend or relative along. Our judge, Claire O'Brien will also be attending, so if you have any questions it's a good opportunity to speak to her, you could pick up some valuable tips! The winners will be announced and trophies given out. Details will follow in a separate email to members including cost and how to reserve a ticket.

Let's make this a positive year for Romford Beekeepers, have a try at showing and support the supper event, the more the merrier.

Good Luck

Angela Mander

National Honey Show

Why not enter the National Honey Show this year? Romford have already proved we produce great honey at the County Show. All you have to do is go to the National Honey Show website and download the rules and schedule. Do read the rules as they are not always the same as ours, then download the entry form. you can also fill that in on-line, it does all the working out for you, put it into a folder then e-mail it as an attachment.

If you don't have much honey try to enter the Essex section we have already done well and you will not be competing with so many members. There are over 300 different classes, so, you must be able to find something even if it's just an empty jar with your own label on, but make sure you comply with all labelling regulations which can be found in your September **BBKA News**.

Then all you have to do is get your exhibits packed in a box, and deliver it to me on **Tuesday 25th October** and I will take it to Sandown, I will also collect it at the end of the show along with any prize money for you, so you don't have to worry about anything, even if you go to the show!

It would be nice to see a lot of entries from Romford, any problems get in touch with me. My number is below on our newsletter

Jim McNeil

Honey Show photo, Pat Allen



EBKA 2022 Annual Conference

Sunday 13th November 2022 10am – 3.30pm

Copped Hall, Epping CM16 5HR

There is still time to Get your tickets for the annual Conference. The talk is, 'Pressure on Pollinators" with Clive de Bruyn, Peter Kennedy and Ben Woodcock. Covering topics on pests and diseases, environmental factors and predators that affect honey bees and other pollinators.

Tickets are £25 including lunch and refreshments. Bookings may only be made via Eventbrite. Full details are on the Eventbrite booking page: <https://www.eventbrite.co.uk/e/313533315587>

Refreshments: Please make a lunch menu selection when booking your ticket(s).

A good opportunity to meet beekeepers from other divisions. Also the cups and awards for prize winners at the Essex Honey Show are given out!

Sue Richardson

STOP PRESS! Watch Out for Asian Hornets!

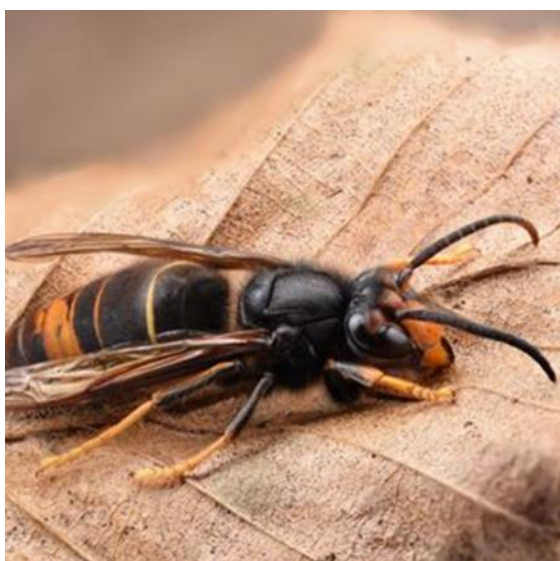
At the time of going to press the EBKA has confirmed that three asian hornets have been seen in Rayleigh Essex:

<https://www.bbka.org.uk/News/three-asian-hornets-confirmed-in-rayleigh-in-essex>

There was also a “credible report” of an Asian Hornet in Chelmsford earlier in the month, while there are no further details at this time, the report can be read here:

<https://www.bbka.org.uk/news/first-credible-2022-report-of-an-asian-hornet>

Keep an eye out for Asian hornets hawking round your hives. If you suspect you have seen one, **try and take a photo, and don't forget to report it** by emailing alertnonnative@ceh.ac.uk.



Asian Hornet



European Hornet (Not a problem)

Romford Division Contacts:

Secretary: Sue Richardson

01708 381900 / 07971 957333. susanmrichardson7@gmail.com

Chairman: Paul Wiltshire

01277 375454 / 07870 258192. paul.g.wiltshire@btinternet.com

Divisional Voting Member/Trustee: Jim McNeill

01708 765898/ 07743 310143. jimandliz44@aol.co.uk

Websites:

<https://ebka.org>

<https://romfordbeekeepers.org>